

2022/2023

50TH ANNIVERSARY SEASON

ST. LOUIS' PREMIER THEATER FOR YOUNG AUDIENCES



October 9 – November 6, 2022

Adapted from the book by Newbery Medal-winning author

Paul Fleischman

PRODUCED BY SPECIAL ARRANGEMENT WITH PLAYSSCRIPTS, INC.

DIRECTED BY JESS SHOEMAKER

LIVE AT THE **Grandel Theatre** | STREAMING AT [METROPLAYS.ORG](https://metroplays.org)



Seedfolks



Welcome to Seedfolks,

THE FIRST MAINSTAGE PRODUCTION OF METRO THEATER COMPANY'S 50TH ANNIVERSARY SEASON.

This is a story of community - of how it can grow through faith, respect, and trust in one child's vision and potential. In a way, *Seedfolks* is a metaphor for MTC – but in our case, the inspiration comes not from one child, but from all young people.

With this production, and throughout this year, we celebrate the many communities who have worked side-by-side to make this 50th anniversary milestone possible:

- The generations of parents who have shared the magic of live performances first with their children, then with their grandchildren.
- The tens of thousands of educators who have opened new worlds for their students through MTC programs.
- The artists, staff, administrators, teaching artists, technicians, volunteers, and more whose talents and care earned MTC an international reputation for excellence.
- The community leaders from MTC's board and generous philanthropists who have shaped and sustained the past, present, and future of the company through their vision and dedication.
- And, most critically, the young people who have experienced an MTC program – nearly two and a half million of you! You are the source of MTC's inspiration, and it is your joy that gives our work purpose.

As we celebrate the power of community through this story on stage, we celebrate each of you.

**Thank you —
and enjoy!**



JULIA FLOOD
ARTISTIC DIRECTOR



JOE GFALLER
MANAGING DIRECTOR

DIRECTOR'S NOTE

“ That’s how everybody’s grown up: with a little hardship, with a little pain, and a little hope, and a little joy. The problem is we don’t know each other, we don’t let each other in. It is hard to hate up close.

— MICHELLE OBAMA

”

This is a gentle story, and a hopeful one.
It has lots of hidden treasures. Some of them are onstage today.
Others are ones for you to find later...

At home and in your neighborhood,
On the way to school and in the humans that you meet,
At your fingertips and just beneath the soil...

It ends with community: the kind that is a refuge in a sometimes-scary world.
We hope this play is like that: a new friend, a familiar face, an unexpected connection.
And the chance to imagine something beautiful...



JESS SHOEMAKER
DIRECTOR





Seedfolks

THE CAST

(in alphabetical order)

JOSHUA MAYFIELD

MICHAEL THANH TRAN

TYLER WHITE

DESIGN & PRODUCTION TEAM

DIRECTOR

Jess Shoemaker

STAGE MANAGER

Jimmy Bernatowicz

ASSISTANT STAGE MANAGER

Journeye Carter

SCENIC DESIGNERS

Margery and Peter Spack

SCENIC ARTIST

Cristie Johnston

PROPS MASTER

Katie Orr

LIGHTING DESIGNER

Jayson M. Lawshee

SOUND DESIGNER

AhSa-Ti Nu Tyehimba-Ford

COSTUME DESIGNER

Delena Bradley

COSTUME ASSISTANT

Jazmin Moore

DIALECT COACH

Leah Gabriel

METRO THEATER COMPANY PRODUCTION STAFF

PRODUCTION MANAGER

Jimmy Bernatowicz

TECHNICAL DIRECTOR

Erik Kuhn

ARTISTIC ADMINISTRATION COORDINATOR

Julia Hogan Laurenson

FRONT OF HOUSE STAFF

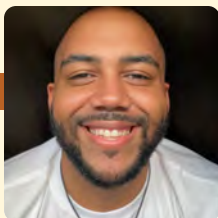
HOUSE MANAGEMENT

Cameron Tyler

Teresa West

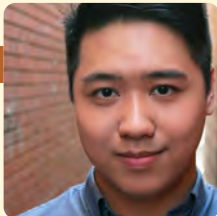
The video or audio recording of this performance by any means is strictly prohibited.

CAST BIOGRAPHIES



JOSHUA MAYFIELD (HE/HIM) **ENSEMBLE**

is very excited to collaborate with Metro Theater Company. Josh started acting as a sophomore in high school landing the role of Frank Jr. in *Catch Me If You Can*. Since then, he has known his passion for the arts was ever-growing, and his journey with acting was just getting started, which led him to take part in several theater productions both in high school and in college. Although he graduated from college with a B.A. in psychology, his desire to pursue acting remains unfazed. He is thrilled to work with Metro Theater Company to help ensure the successful storytelling of *Seedfolks*.



MICHAEL THANH TRAN (HE/HIM) **ENSEMBLE**

is thrilled to return to Metro Theater Company for his onstage debut, having previously served as the animator for Metro Theater Company's production of Idris Goodwin's *Jacked!* He is an actor, director, and producer based in St. Louis. Regionally, he has performed with St. Louis Shakespeare Festival for three seasons, the Repertory Theatre of St. Louis, The Muny, Opera Theatre of Saint Louis, Arrow Rock Lyceum Theatre, and COCA. His TV and film credits include *Four Day Delay* and *90s Baby*. Michael received a B.F.A. from the Sargent Conservatory for Theatre Arts at Webster University. To learn more about Michael and his work, visit michaelthanhtan.com.

INSTAGRAM @[michael.thanh.tran](https://www.instagram.com/michael.thanh.tran) #UnapologeticallyAsian

CAST BIOGRAPHIES



TYLER WHITE (SHE/HER) **ENSEMBLE**

is a native of St. Louis and full-time artist who is elated to continue her work with Metro Theater Company! She graduated from Southeast Missouri State University with a Bachelor of Science in human environmental science. Tyler is granted the duty of serving her role as theater artist both on and off the stage. Her credits on stage include Teaspoon in *Sarafina*, Talisha in *Milk Like Sugar*, Yolanda in *Crowns*, Ensemble in *Black Nativity*, Lillie Mae in *The Me Nobody Knows*, Ensemble in *Don't Bother Me - I Can't Cope* (The Black Rep), Ermina in *Crumbs from the Table of Joy* (Mustard Seed Theatre), Woman in Yellow in *for colored girls who have considered suicide when the rainbow is enuf* (Washington University), and Knight/Ensemble in *King Lear* (St. Louis Shakespeare Festival), Mr. Dennis/Ensemble in *Last Stop on Market Street* (Metro Theater Company), and Mrs. Wormwood in *Matilda The Musical* (COCA). Stage manager credits include *The Barber of Seville* (Union Avenue Opera) and *Hairspray, JR.* (COCA). Assistant stage manager credits include *Canfield Drive*, *Two Trains Running*, and *Nina Simone: Four Women* (The Black Rep).

DESIGN & PRODUCTION BIOGRAPHIES



JESS SHOEMAKER (SHE/HER) | DIRECTOR

is a freelance director, playwright, and educator who has spent the last decade working in classical theater and new play development. In addition to directing *Seedfolks* for Metro Theater Company, her adaptation of *The Odyssey, Looking for Ithaca: An Odyssey*, will premiere at Asolo Repertory Theatre this fall. Jess recently served as curriculum consultant and contributor for the Hadestown Education Initiative. She also spent five years at the helm of the Great River Shakespeare Festival Professional Training Program, where she developed her own curriculum for training skilled, authentic voices in the performance of classical and heightened texts. Additional directing credits include *Sueño* (upcoming, Sargent Conservatory of Theatre Arts at Webster University), *Little Women* and *A Midsummer Night's Dream* (Grandstreet Theatre), *Loverboy*, *Flora Circular*, *12 Ophelias*, and *Tjipeter: A Search History* (University of Texas at Austin). Her plays include *Looking for Ithaca: An Odyssey*, *The Book of Orpah*, (& *Medea*), and *50 Shades of Shakespeare*. Jess holds a B.F.A. in acting from Sargent Conservatory of Theatre Arts at Webster University and a M.F.A. in directing from the University of Texas at Austin. When not in rehearsals, Jess can often be found playing endless games of fetch with her dog, Obe Mayhem. [INSTAGRAM @chester.marie.shoemaker](#)



JOURNEE CARTER (SHE/HER) | ASSISTANT STAGE MANAGER

holds a Master of Music from Shenandoah Conservatory at Shenandoah University and a Bachelor of Music from Webster University—both specializing in vocal performance, specifically opera. Since completing the master's program, she has been actively participating in St. Louis-based productions both on and off stage. [INSTAGRAM @journecarter96](#)

DESIGN & PRODUCTION BIOGRAPHIES



MARGERY SPACK (SHE/THEY) & PETER SPACK (HE/HIM) SCENIC DESIGNERS

are scenery and video designers. Recently they designed scenery for *The Play That Goes Wrong*, *Heisenberg*, and *Safe House* at the Repertory Theatre of St. Louis; *Home* and *Two Trains Running* at The Black Rep; *Brighton Beach Memoirs* (2020 Theatre Circle Award Winner) and *Intimate Apparel* (2018 Theatre Circle Award Winner) at the New Jewish Theatre; and Circus Flora. As Studio Spack Environment Design, Margery and Peter also design corporate theater, product reveals, broadcast news, trade show environments, and private events. They both have Bachelor of Fine Arts degrees from Sargent Conservatory of Theatre Arts at Webster University and reside in their hometown of St. Louis.



KATIE ORR (SHE/HER) | PROPS MASTER

is a designer, painter, theater-marketing aficionado, and graduate of Stephens College. As a theater advocate and native St. Louisan, it's her passion to highlight local theater. She believes there are many incredible unsung companies, which is why she came back to St. Louis to further her mission as a committed designer, artist, and advocate in the St. Louis community. Credits include *Laughter on the 23rd Floor* (New Jewish Theatre Company), *Dress the Part* (The Q Brothers - St. Louis Shakespeare Festival), *Digging Up Dessa* (Metro Theater Company), *Proof* (Moonstone Theatre Company), and *Forgottonia* (Fly North Theatricals). katiemicorr.com
INSTAGRAM @[katiemicorr](https://www.instagram.com/katiemicorr)

DESIGN & PRODUCTION BIOGRAPHIES



JAYSON M. LAWSHEE (HE/HIM) | LIGHTING DESIGNER

is a St. Louis-based lighting and scenic designer, electrician, programmer, and technical director whose experiences includes musical theater, opera, new work, and dance. An alumnus of the Sargent Conservatory of Theatre Arts at Webster University, Jayson holds a B.F.A. in lighting design. Jayson has designed for Metro Theater Company and COCA (Center of Creative Arts) as well as Lyric Rep, St. Louis Shakespeare Festival, and various other companies throughout the area and beyond. Some lighting design credits include *Billy Elliot*, *wUNDERland*, and *Four Little Girls* (COCA), *Last Stop on Market Street* and *Ghost* (Metro Theater Company), and *Love at the River's Edge* (St. Louis Shakespeare Festival). He has additionally served as the assistant lighting designer on the Repertory Theatre of St. Louis' production of *Pride and Prejudice*. He was the lighting programmer for St. Louis Shakespeare Festival's production of *King Lear*. He has interned at Wolf Trap Opera Company in Washington D.C. and served as assistant master electrician at Opera Theatre of Saint Louis. Jayson often refers to the tech table as his "home" and is passionate about making theater in all forms accessible to all people.



AHSA-TI NU TYEHIMBA-FORD (SHE/HER/THEY/THEM)

SOUND DESIGNER

is very excited to be a part of *Seedfolks* with the Metro Theater Company. AhSa-Ti Nu has worked on *Kaleidoscope Crown*, *Big Machine* (fka *The Butterfly Room*), and *Billy Elliot* with COCA, *Peter Pan Jr.* with Ignite Theatre, and the 8th Annual San Francisco Son Jarocho Festival, So Soul San Francisco Black Art Salon Series, and *Mighty Real: A Fabulous Sylvester Musical* with Brava Theater Center in San Francisco. She also recently composed, produced, and directed the film *Overlooked Giants: Stories of Queer Women of Color in the Arts*. AhSa-Ti Nu holds a Bachelor of Science in sound arts from SAE Expression College for Digital Arts in Emeryville, California. AhSa-Ti Nu is a member of the Recording Academy and Alpha Kappa Alpha Sorority Inc. Learn more about AhSa-Ti Nu at ahsatinu.com. [INSTAGRAM @ahsati_nu](https://www.instagram.com/ahsati_nu) [FACEBOOK @ahsatinumusic](https://www.facebook.com/ahsatinumusic)

DESIGN & PRODUCTION BIOGRAPHIES



DELENA BRADLEY (SHE/HER) | COSTUME DESIGNER

is a costume and scenic designer currently based out of Chicago, Illinois. Recent credits include costume design for the National High School Institute Theatre Arts Division 2022 program, associate costume designer for *Fences* with American Blues Theater (Chicago), costume design for *Much Ado About Nothing* at Asolo Repertory Theatre/FSU (Sarasota), costume and scenic design for *The Infinite Energy of Ada Lovelace* with Third Eye Theatre Ensemble (Chicago), costume design for *Alcina*, *Lucio Silla*, and *Albert Herring* at Chicago Summer Opera, and production and costume design for *Addict Named Hal*, a feature film by Lane Stanley (Austin, Texas). Delena received a M.F.A. from the University of Texas at Austin in 2020, and a bachelor's degree in theatre technology and design from Ball State University. **INSTAGRAM** @delenamakesartssometimes
FACEBOOK @delena.bradley



LEAH GABRIEL (SHE/HER) | DIALECT COACH

is an actor, producer, and dialect coach originally from Australia. Previous dialect coaching credits include *Great Expectations* (Great River Shakespeare Festival), *Oliver!* (Quintessence Theatre Group), *The Clearing* (Theater 808 / 59E59 Theaters), *Underland* (terraNOVA Collective / 59E59 Theaters), *Barnum* (Skyline Theatre Company), *Shipwrecked! An Entertainment* and *Sherlock Holmes and the West End Horror* (Cortland Repertory Theatre), and *Cosi* (Australian Made Entertainment). Learn more about Leah at leahgabrielactor.com.

METRO THEATER COMPANY PRODUCTION STAFF

**STAGE MANAGER,
SEEDFOLKS
PRODUCTION MANAGER**
Jimmy Bernatowicz

**TECHNICAL
DIRECTOR**
Erik Kuhn

**ARTISTIC ADMINISTRATION
COORDINATOR**
Julia Hogan Laurenson

MEET THE PLAYWRIGHT

PAUL FLEISCHMAN

Paul Fleischman's books for children and young adults are known for bridging the page and performance. *Joyful Noise: Poems for Two Voices* has been rendered onstage by Word for Word in San Francisco and won the 1989 Newbery Medal. His novels, *Bull Run* and *Seedfolks*, use monologues from multiple vantages to describe battle and the birth of a Cleveland community garden respectively. *Breakout*, a mix of novel and one-woman show based on an all-day Los Angeles traffic jam, was a finalist for the National Book Award. Using 52 voices to tell a high school senior's story, *Seek* was performed at the Kennedy Center in 2006.



His plays include the one-act *Mind's Eye* and the seven-plays-in-one parody of theatrical warhorses, *Zap*. His work for adults has been published in *The New Yorker* and includes the play *Logomaniacs*, an intellectual freak show exhibiting 26 real life word-obsessives. In 2012, Paul Fleischman was the United States nominee for the international Hans Christian Andersen Award.

ABOUT PLAYSRIPTS, INC.

Playscripts, Inc. is an independent publisher of new plays and musicals, established in 1998 by brothers and playwrights Doug and Jonathan Rand. The independent theatrical agency represents a great diversity of playwrights, composers, and lyricists. Its commitment to representing artists through innovative channels with a specific focus on creating opportunities for audiences to connect with their great work has spanned two decades and has expanded into representing over 1,000 of the live theater industries' most notable contributors. Playscripts is an imprint of Broadway Licensing, a full-service theatrical licensing and producutorial group. Playscripts, Inc. strives to curate a catalog of plays that meets the needs of theater makers and exceeds the expectations of audiences. It's at the forefront of play publishing, providing a unique and extensive suite of services for playwrights and customers alike. Using technology, innovation, and creativity, Playscripts, Inc. forges connections between playwrights and new audiences. Learn more at [playscripts.com/about-us](https://www.playscripts.com/about-us).





METRO THEATER COMPANY LEADERSHIP



JULIA FLOOD (SHE/HER) | ARTISTIC DIRECTOR

has directed *Digging Up Dessa*, *The Very Hungry Caterpillar Show*, *It's a Wonderful Life*, *The Girl Who Swallowed a Cactus*, *The Hundred Dresses*, *Frida Libre*, *Bud, Not Buddy*, *Hans Brinker and the Silver Skates*, *The Miraculous Journey of Edward Tulane*, and *In This Corner: Cassius Clay*, *Out of the Box*, *Talkin' Trash*, *Afflicted: Daughters of Salem*, *Unsorted*, and *Say Something, Do Something!* for Metro Theater Company since she moved to St. Louis to become artistic director in February 2014. Previously, Julia spent 16 years as artistic director of Eckerd Theater Company in Clearwater, Florida where she commissioned such plays as *Vote?*, by Eric Coble, provoked by Florida's role in the 2000 presidential election, and *Battledrum* by Doug Cooney with Lee Ahlin, a musical about the effects of war on young people through the lens of Civil War drummer boys, subsequently produced at Metro Theater Company. A graduate of Northwestern University, Julia spent seven years as a resident member of the Bloomsburg Theatre Ensemble in Pennsylvania, a unique artist-led ensemble founded under the guidance of legendary acting teacher Alvina Krause, before following a freelance career as actor/director/playwright/teacher. Julia served on the national board of directors of Theatre for Young Audiences/USA from 2011 to 2019, and brings more than 40 years of experience to her role as artistic director of Metro Theater Company.



JOE GFALLER (HE/HIS) | MANAGING DIRECTOR

joined the Metro Theater Company team in 2019. During his tenure to date, Metro Theater Company has seen dramatic growth in both its audience base and its donor base. In partnership with Artistic Director Julia Flood, he has co-led the company through its recent evolutions during the COVID-19 pandemic, from its virtual programming to its safe return to live performances. Prior to joining the MTC team, Joe received national recognition for his work in building young, diverse, and national audiences for Opera Theatre of Saint Louis during his tenure as director of marketing and public relations - and for expanding OTSL's civic footprint as the producer of the company's Opera Tastings series, through artist community tours, and the creation and growth of its Engagement + Inclusion Task Force. His career has also included roles with the American Repertory Theater, the Alliance Theater, and 7 Stages, and consulting projects for the National Blues Museum, the Utah Symphony, and the documentary film *Flint: The Poisoning of an American City*. He has directed over two dozen professional or university productions, including regional premieres by David Mamet, Caryl Churchill, and others. A graduate of Harvard University, he also serves as adjunct faculty at Webster University in the Arts Management and Leadership MFA program.

Seedfolks

PRESENTED IN PART
THANKS TO



LEAD SEASON INSTITUTIONAL SUPPORT PROVIDED BY



THE SHUBERT
FOUNDATION INC.



NATIONAL
ENDOWMENT
FOR THE
ARTS
arts.gov



WHITAKER
FOUNDATION



Edward Jones
MAKING SENSE OF INVESTING



theSAIGHfoundation.org



STREAMING OF *SEEDFOLKS* IS PART OF MTC REMOTE,
A NEW VIRTUAL INITIATIVE SUPPORTED BY



SPECIAL THANKS TO

Bayer
Adam Flores
Jennifer A. Lin Photography
Nancy Kim Le
Tom McCarthy
Jamie McKittrick
Rosemary Newcott

The Noble Neighbor
The Novel Neighbor
Operation Food Search
Carl Overly, Jr.
Gaby Rodriguez
Mark Sandvos
St. Louis Black Repertory Company

St. Louis Public Library
Jacqueline Thompson
Michael Thanh Tran
We Stories
Tyler White
Rosie Willis and the Fresh Starts
Community Garden

FILMED BY **HEC** AT THE GRANDEL THEATRE

CONTRIBUTIONS

We are grateful for the generous support of so many in our community. Without you, Metro Theater Company's work would not be possible. We include a list of all supporters who have made contributions or pledges between July 1, 2021 and September 15, 2022.

We regret any inadvertent omissions from this list. If you made a pledge or a gift and do not see your name listed here, please contact Managing Director Joe Gfaller at joe@metroplays.org.

THE CAROL NORTH NICHOLAS KRYAH SOCIETY

The Carol North and Nicholas Kryah Benefactor Society was established to honor four decades of leadership by Artistic Director Carol North and Resident Artist Nicholas Kryah.

Members of the Benefactor Society contribute a minimum of \$1000 annually to ensure that Carol and Nicholas' legacy of meaningful artistic work for young audiences continues to grow.

PLATINUM BENEFACTOR

(\$50,000 - \$99,999)

John D. and Anabeth C. Weil
Small Business Administration

GOLD BENEFACTOR

(\$25,000-\$49,999)

Emerson
National Endowment for the Arts
PNC Foundation
Regional Arts Commission
The Shubert Foundation
Whitaker Foundationn

SILVER BENEFACTOR

(\$10,000-\$24,999)

Arts and Education Council
Crawford Taylor Foundation
Elizabeth Green
Missouri Arts Council
The Opportunity Trust
The Saigh Foundation
The Trio Foundation of Saint Louis
US Bank

BRONZE BENEFACTOR

(\$5,000-\$9,999)

Bayer
Des Lee Collaborative Vision
Susan and James Gamble
Gateway Foundation

Joe Gfaller and Kraig Turner
Amy Hoch Hogenson and Andrew
Hogenson
Guy B. Jaffe and Judy Schwartz Jaffe
Nestle Purina Pet Care Company
Carol North and Nicholas Kryah
RGA
Ten Talent Foundation
Phoebe Dent Weil

BENEFACTOR

(\$1,000-\$4,999)

Joseph Albitar
Ameren Corporation
Julius B. Anthony
Sara Yang Bosco and Joseph Bosco
Joan T. Briccetti
Lauren Bruno
Dr. Nicole and Nick Burkemper
Childrens Theatre Foundation
of America
Rachel Chrisman
The Clark Fox Family Foundation
Commerce Bancshares, Inc.
Judith Courtney
Crystal Allen Dallas and
Patrick Dallas
Enterprise Holdings Foundation
Melanie and Anthony Fathman
Mary Ellen Finch and John D. Finch
Julia Flood and Tom McCarthy
Nancy and Tom Garvey
Susan and Mike Gibbons
Karen and Lawrence Goering

Jim and Camille Greenwald
Dr. Nicholas and Kristin Guehlstorf
Steve Trampe and Jenny Gupta
Cillah Hall
Josh Jaffe
Jane and Ken Jones
Katy and Joe Kaufman
Marcia Kerz
Josh and Tammie Knopp
Laura Lancia
Anatoli Lataria
Ellen Livingston and Edward Levitt
Darci and John Madden
Melissa Posten and Greg Magarian
Maurice Mahone
McKelvey Family Charitable Trust
Al and Marsha Mitchell
James and Mary Moog
Peggy O'Brien
Bailey and Dustin Pashia
Megan Ann Rasmussen
Sarah and Mike Richmond
Melanie and Ben Schmickle
Matt and Annemarie Schumacher
Tom Schunk
Kenneth and Amber Simpson
Target
Mary and Simon Tonkin
Nancy Tonkins
Coleen Trentmann
Jennifer Walton
Michael Williams
Kathie and Rich Winter
Sharon Zackula and Jeffrey Rogers

CONTRIBUTIONS

(\$500-\$999)

Rev. Kevin and
Lillian Anthony
Marlene Ann Birkman
Stacey Brezenger
Creach Family
Marty Dames
Lionelle H. and
James R. Elsesser
Erika and Colin Fiola
Charles and
Hannah Grimshaw
Naretha Hopson
Larry Marsh and Kim P. Jones
Paul Jorjorian and
Stacey Wehe
Clare Kerz
Dr. Nikoleta Kolovos
Gerald Kowarsky
Jennifer Lin and Tom Osborn
Jerri and
William Livingston, Jr.
Christine Phelps
Leslie Peters and
Dan Rubright
Lynn L. and Robert Rubright
Deborah and
Dr. Jacques S. Van Ryn
Pam Washington
Erica M. and Aaron V. Wilson
Patricia Winchell and
Michael Dwyer

(\$250-\$499)

The Boeing Company
Tracyne Caumartin
Vanessa Cooksey
Terry Crow
Caressa Davis
Cara Demant
Jill Dixon Young
Beth Duda
Jen Duncan
Kim and Tim Eberlein
The Estelle W. and
Karen S. Kalish Fund of
the St. Louis Community
Foundation
Scott and Judy Guerrero
Shannon Hadley
Shannon Hadley
Martha Han
Jim Hannon

Ronald and
Hattie Robinson Jackson
Mary Ann Lazarus and
Daniel G. Jay
Colin Keller
Ward and Carol Klein
Anatoli Lataria
Don and Peggy Lents
Ronan Lev
Sean and Laurie Lock
Tony and Maria Maldonado
Jason McAdamis
Mary Middleton
Susan W. Nall
Erin Oliver
Wendy Olk
Deborah Patterson
Owen Phelps
Barbara Pierce
Erica Randall
St. Louis Community
Foundation
Charles Stewart
Michael Stokes and
Patricia Wendling
Gaile Thoele
Mei Chen Welland
Mary Whitman

(\$100-\$249)

Julius Adewunmi
Shreya Ahuja
Bonnie Barczykowski
Otis Beard
Carol Bonnefil
Mina Charepoo
Michael Chiodo
Rachel Chrisman
Mary N. St. Clair
Elizabeth Collumb
James Croft and Koltan Frey
Adrienne Davis
Connie Emge
Sara and Fred Epstein
Ron Gibbs
David Gonzalez
Susan Meryl Greenberg
Melissa Grizzle
Anne and Patrick Henning
Maggie Glauber Horn
Caron House
Joan and Thomas Isbell
Victoria Iturri
Patti and Ron James

Dr. Christy Jenkins
Pamela Karanja
Karen Kelsey
Dotty Kemper
Josh Knopp
Anita Lamont
Corena Larimer and
Genevieve Nassif
Denise and Bob LaRossa
Bill Larson
James and Annie Lin
The Lumistella Company
Phyllis Maritz
Steve Martin
Nancy McCarthy
Diane McCullough
Michele Mosley
Debi Needham
Melissa Pillot
Wanda L. Salzman
Jeff Seale
Tanya Seale
Ann Seoney
Karen Shoulders
Elizabeth Simons
Lynn and Mark Smith
Liz Sondhaus
Genevieve and
David Steidtmann
Shelley Stewart
Mike and Pat Stokes
Jeffery and Karen Stokes
Joanne Strathearn
Denise Thimes
United Health Care
Thomas Urbom
Sheila VanEssen
Cort VanOstran
Vertex Pharmaceuticals
Molly Walsh and Kevin Farrell
Warner Media
Beverly Whittington
Matt Wilkinson
Bill Winfrey

(\$1-\$99)

Dorlita Adams
Amazon
American Family Insurance
Judith Anderson
Zoey Bergstrom
Haley Biehl
A.J. Bockelman
David Brinker
Mary Lynn Brophy
John S. Callahan

Deanna Carpenter
Melissa Carter
Paul Cereghino
Edward Coffield
Christopher Collumb
Sarah Connors
Janet Dayawon
Vickie Denson
Cynthia Dupureur
Tovah Edwards
Elizabeth Fathman
Margaret Faul
Mark Fernandez
Robyn B. Flatt
Barbara Fleming
Laura Franz
Juliana Fuller
Valerie Fuller
Vivian Gibson
David Golden
Valerie Goldston
Wendy Greenwood-Leveling
Gwendolyn Grimstead
William Grivna
Brittany Guelfo
Roberta Gutwein
Lynn Hackethal
Jo Ann Haden-Miller
Michael Dorn and
Andrew Hernandez
Myrna and Arnold
Hersman
Phillip M and
Teresa Mayhew Hess
Betsy Holland
Mia Howard
Toni Howell-Pentecouteau
Jane Alyce Hunt
Darcy Hunter
Russell Jackson
Dakotah Jennifer
Pratik Jhaveri
Matthew Kerns
Maggie Klonsky
Emma Klues
Terry Knies
Amy Knox
Linda Kram
Linda Kram
Joanne LaSala and
Karen Tokarz
Abby Lorico
Tracy MacIntosh
Lynn Maupin and
Dale Bilyeu
Mary Ellen McGrath

CONTRIBUTIONS

Stacey and Patrick McMackin
 Victoria Menke
 Linda Mitchell
 Caroline Moll
 Meagan Mottl
 Colleen Muther
 Amber Nelson
 Rosemary Newcott
 Jennifer Ohs
 Bevin Packman
 Kaitlin Page
 Rhoda Parker
 Steven Parks
 Melissa Pennington
 Nicole Pingel
 Joseph Portnoy
 Cynthia Prost
 Florence Pullen
 Gregor and Susan Ramsey
 Jeffery J. Randle
 Michael and Emily Robbins
 Ruth Rochester
 Carla Rosen
 Amy Rosenberg Schwartz
 Sarah and Adam Rugo
 Sarah Ruiz
 Elissa Schauman and
 James Wyrsh
 Jackie Schirn
 Troy Schnelten
 Ellie Schwetye
 McKinley Seale
 Jennifer Sebastian
 Kristin Shantz
 Julie Shapleigh
 Claire Shapleigh
 Mindy Shaw

Jack and Alicia Sheehan
 Shery Sissac
 Dennis Smith
 Jocelyn Sprouse
 Laura Stefacek
 Carol Stephens
 Mark Strothmann
 Nathan Thomack
 Jim Timmerberg
 David Tobin
 Barbara and
 Gregory Toumayan
 Kathleen Uhler
 Lynn Ullman
 Adena Varner
 Jenna Voss
 Carol A. Waide and
 Stanley John Waide Jr.
 Lizi Watt
 Nan Wiggins
 Jason Witte
 Aimee Wittman

In-Kind Contributions:

The Ambassadors
 of Harmony
 Amp Up Action Park
 The Big Muddy Dance
 Company
 Bulrush STL
 Circus Flora
 Coterie Creative
 Cyrano's Cafe
 Dewey's Pizza
 Edelbrand Pure Distilling
 Ellen Livingston and
 Edward Levitt

The Fabulous Fox St. Louis
 The Face & Body Spa
 Mary Engelbreit
 Merrill Advisor Development
 Program—West Region
 Leadership Team
 The Muny
 Joe Gfaller and Kraig Turner
 The Hair Lab STL
 Pamela Hastings
 Amy Hoch Hogenson and
 Andrew Hogenson
 Ann Tygett Jones
 Jean LaChat Photography
 Jennifer Lin Photography
 Kakao Chocolate
 Kranzberg Arts Foundation
 Les Bourgeois Vineyards
 Life Time Fitness Frontenac
 Jennifer Lin and Tom Osborn
 Loaded Elevated Nachos
 The Lumistella Company
 MADE Makerspace
 Metro Theater Company
 Michael Hogan
 Missouri Botanical Garden
 Narwhal's Crafted
 Opera Theatre of Saint Louis
 Melissa Posten
 Myseum
 Noliware Studio
 The Novel Neighbor
 Bailey and Dustin Pashia
 Pinnacle Imports
 Playtime Party Center
 PLNK STL
 Pure Barre Ladue and CWE

Repertory Theatre
 St. Louis
 Sarah Thompson
 Productions
 Schlafly Bottleworks
 St. Louis Art Museum
 Saint Louis Zoo
 St. Louis Cardinals
 St. Louis Christmas
 Carols Association
 St. Louis City Soccer Club
 St. Louis Symphony
 Orchestra
 St. Louis Vitality
 Unlimited Spa
 Stages St. Louis
 STL Style House
 Swing-A-Round Fun Town
 Robert Swingler
 Switchgrass Spirits
 Tale to Table
 Taylored Tents
 Total Wine & More
 Traveling Tea
 Ultimate Ninjas STL
 Upper Limits Rock Gym
 Urban Chestnut Brewing
 Company
 Vitality Unlimited Spa
 Wellbeing Brewing Co.
 Lauren Younge
 Zindlers Sports
 Collectibles

TRIBUTES AND MEMORIALS

In honor of Jim and Susan Gamble

Jeffery and Karen Stokes

In honor of Joe Gfaller

Josh Knopp
 Steve Parks

In honor of Erik Kuhn and Jessie Youngblood

Helen Cole Kuhn
 Tina Mahtani

In honor of Jennifer Lin

Alice Ferris

In honor of John Meehan

Steve and Maryalice Gallagher

In honor of Earl Mueller

Dan Mueller

In honor of Carol North and

Nick Kryah

Stan and Marilyn Geiger/Stribling
 Nancy Tonkins

In honor of Peggy O'Brien

Jeff Buchek and Marissa Strathearn

In honor of Denise Thimes

Marylenn Mann and Franklin Jacobs

In honor of Mary Tonkin

Mary Schoolman

MISSION STATEMENT

Inspired by the intelligence and emotional wisdom of young people, we create professional theater, foster inclusive community, and nurture meaningful learning through the arts.

STAFF

Julia Flood Artistic Director

Joe Gfaller Managing Director

Karen Bain
Education Director

Erik Kuhn
Technical Director

Sarah Thompson
Director of Communications
and Media

Jennifer Lin
Content Marketing
Manager

Gen Zoufal
Resident Teaching
Artist

Jimmy Bernatowicz
Production Manager

Bailey Pashia
Individual Support and
Events Manager

Eleanor Marsh
School Bookings and
Audience Services
Manager

Aubrey Felty
Teaching Artist Fellow

Julia Hogan Laurenson
Artistic Administration
Coordinator

Michele Mosley
Grants Manager

McKinley Seale
Admin & Operations
Associate

Britni Eggers
Graphic Designer

Tyler White
Bookkeeper

BOARD OF DIRECTORS

Coleen Trentmann (President)

Julius B. Anthony

Amy Hoch Hogenson

Sarah Richmond

Erica Wilson (Vice President)

Rachel Chrisman

Josh Jaffe

Jennifer Walton

Darci Madden (Secretary)

Julia Flood*

Laura Lancia

Pamela Washington, Ph.D.

John D. Weil (CFO)

Joe Gfaller*

Anatoli Lataria

Michael Williams

Joseph Albitar

Kristin Guehlstorf

Maurice Mahone

*ex officio, non-voting

EMERITUS MEMBERS

David Bentzinger

Camille Greenwald

Susan W. Nall, Ph.D.

Zaro Weil

Marlene Birkman, Ph.D.

Marcia Kerz

Joseph M. Noelker

Lynn Rubright

Terry Bloomberg

Daniel Jay

Peggy O'Brien

Mary Ellen Finch, Ph.D.

Ken Jones

Mary Tonkin

Susan Gamble

Ellen Livingston

Anabeth C. Weil

Nancy Garvey

James R. Moog

FOUNDERS

Metro Theater Company is St. Louis' premier professional theater for youth and families and St. Louis' third-oldest professional theater company. Since 1973, Metro Theater Company has been creating productions that respect young people's intelligence, tell compelling stories, stimulate curiosity and provoke thoughtful reflection. The Company has reached a total audience of more than two million and has a national reputation for excellence in the field of professional theater for young audiences. Metro Theater Company has received major honors and awards, both locally and nationally. The Company is not-for-profit 501(c)3 organization and is a proud member of the Theatre Communications Group (the national service organization for non-profit professional theaters), Theatre for Young Audiences/USA (the U.S. chapter of the international association of theaters for young people), and Missouri Citizens for the Arts.



SHARE YOUR MTC MEMORIES

METRO THEATER COMPANY IS 50!

To help celebrate, we are collecting oral histories from anyone who has been part of our past.

- Were you a **child** who saw a MTC production years ago?
- An **artist** who performed with us?
- A **parent** of a summer arts program or camp participant?
- A **teacher** whose classroom we visited?
- A **caregiver** who enjoyed sharing a MTC production with a young person?
- A **former staff member, board member**, or volunteer who made the impossible... possible?
- A **supporter** who believed in the Metro Theater magic from the early days?

Your story may appear in our video series, lobby displays, or even a commemorative book that will help others learn about MTC's impact over the last 50 years.

PLEASE VISIT
METROPLAYS.ORG/HAPPY-BIRTHDAY-MTC
TO LEARN HOW TO PARTICIPATE!





DISCUSSION QUESTIONS



THESE QUESTIONS ARE GREAT TO USE ON THE RIDE HOME OR ANY TIME AFTER YOU HAVE WATCHED THE PERFORMANCE!

1. The characters in *Seedfolks* learn from one another about gardening. Have you ever learned about something from a neighbor?
2. If you had the chance to plant something in a garden, what would you plant?
3. There are many characters in *Seedfolks*. Which character did you connect with the most?
4. During the play, lots of the neighbors make assumptions about one another and those assumptions turn out to be wrong. Have you ever made an assumption about someone and learned you were wrong?
5. What is a change you could make in your community?
6. Why do you think they chose to have three actors play so many different characters?
7. What did the actors do to make their characters different from one another?
8. The characters in *Seedfolks* find different ways to help one another. When have you helped someone else or when has someone helped you?



SAVE THESE DATES!

Metro

**THEATER
COMPANY**

1973 **50** YEARS 2023

WE ARE

50

Let the celebration begin!

**BE A PART OF OUR 2022/2023
50TH ANNIVERSARY SEASON**

SEP 9 - OCT 16:

Bold, Brave, Curious!

WORLD PREMIERE

School Tour & The Sun Theater

OCT 9 - NOV 6:

Seedfolks

The Grandel Theatre

FEB 5 - MAR 5:

Spells of the Sea

WORLD PREMIERE

The Grandel Theatre

APR 2-16:

Go, Dog. Go!

The Big Top