

**“MY GRANNY IS
A SUPERHERO...
MY GRANNY
GROWS REAL FOOD!”**

CREATED BY ALLIANCE THEATRE
INSPIRED BY THE CHILDREN'S BOOK BY
PEARL CLEAGE AND ZARON BURNETT, JR.
ILLUSTRATED BY RADCLIFFE BAILEY
DIRECTED BY ROSEMARY NEWCOTT




IN MY GRANNY'S GARDEN



INTERACTIVE LEARNING GUIDE

TAKE A LOOK AT WHAT'S INSIDE:

ABOUT THE CREATORS
ABOUT THE DIRECTOR
ACTIVITIES FOR THE CLASSROOM OR HOME
DISCUSSION QUESTIONS
PARTNERS



FOR BEST USER
EXPERIENCE
DOWNLOAD
ACROBAT
READER HERE

**This guide is for educators, parents, guardians,
and caregivers. You name it—you can use it!**

This guide is filled with activities and conversation starters that can be used before or after you see *In My Granny's Garden*. Whether you are an educator, parent, or caregiver, the materials inside have been curated to extend the experience with this show.

ABOUT *IN MY GRANNY'S GARDEN*



SYNOPSIS

Inspired by the children's book by acclaimed playwright and *New York Times* bestselling author Pearl Cleage and her husband, writer and director Zaron W. Burnett Jr., *In My Granny's Garden* invites the youngest audiences to explore the glory of growing your own food. Watch a tiny seed become a field of corn, green beans, collard greens, and bright red tomatoes. Step into a visual feast inspired by world-renowned artist Radcliffe Bailey's original paintings, and discover the one superpower that fuels Granny's garden. The play promises to leave the very young nourished in body and soul. *In My Granny's Garden* was commissioned by the Alliance Theatre in Atlanta, Georgia.



ABOUT THE CREATORS



Pearl Cleage is an Atlanta-based, award-winning playwright and bestselling author, whose works include eight novels and a dozen plays. In 1998, her novel, *What Looks Like Crazy On An Ordinary Day*, was an Oprah Book Club pick and spent nine weeks on the *New York Times* bestseller list. She is also a performance artist, collaborating frequently with her husband, Zaron W. Burnett, Jr., under the title *Live at Club Zebra*. Read more at pearlcleage.net

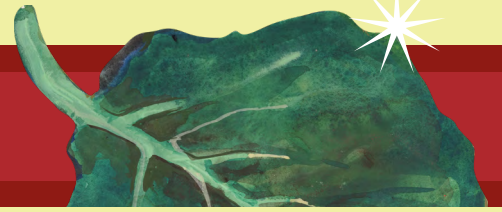


Zaron W. Burnett, Jr. is an American novelist, director, and performance artist. He is the creator of Club Zebra, Atlanta's only floating speakeasy, cabaret, and international center of bohemian Negritude. Zaron and Pearl regularly join forces as writers and performance artists for a variety of projects. *In My Granny's Garden* is based on a very special summer Zaron, as a five-year-old, spent learning about life with his great-grandmother.



Radcliffe Bailey is a contemporary American artist noted for mixed-media, paint, and sculpture works that explore African American history. His work has been exhibited at many museums including Atlanta's High Museum of Art, and his work is held in many permanent collections, including the Metropolitan Museum of Art, Smithsonian Museum of American Art, and the Art Institute of Chicago.

ABOUT IN MY GRANNY'S GARDEN



ABOUT THE DIRECTOR | Rosemary Newcott



Rosemary Newcott spent 20 years as the Sally G. Tomlinson Artistic Director of Theatre for Youth and Families at Atlanta's Alliance Theatre. In addition to directing, and sometimes devising two TYA productions a season, Rosemary also mounted David Bell's lavish production of *A Christmas Carol*, featuring an all-Atlanta multicultural cast. Rosemary developed the Alliance Palefsky HS Collision Project and created its thriving Kathy and Ken Bernhardt Theatre for the Very Young program. On the national level, Rosemary has developed/directed two plays at New Visions/New Voices: *Einstein is a Dummy* with Karen Zacarias and Debbie Wicks La Puma and Pearl Cleage's *Tell Me My Dream*. She also directed the premieres of Mo Willem's *Knufflebunny: A Cautionary Musical* and Laurie Brook's *Jason Invisible* both at the Kennedy Center and Zacarias' and La Puma's *Frida Libre* at LaJolla Playhouse. Most recently, Rosemary devised/directed a new musical version of *Thumbelina* with Amanda Morgan and KSU students at Kennesaw University and directed the premiere of *Hans Christian Andersen* by Tim McDonald at Nashville Children's Theatre. Rosemary also recently directed the debut of Pearl Cleage's *In My Granny's Garden* at the Alliance, and is currently directing the play at Metro Theater Company. Earlier in her career, Rosemary acted/directed in nearly every Atlanta theater company, starting her path at the Academy Theatre.

Rosemary is a recipient of a Princess Grace Foundation Fellowship and also a Princess Grace Special Project Award for her adaptation and direction of André Benjamin's *Class of 3,000 LIVE* at the Alliance. She has received several Atlanta Suzi Awards for direction and the 2010 Spirit of Suzi award. In 2018 she received the Suzi Lifetime Achievement award and in 2019, the Harold Oaks Excellence in TYA award and the AATE Compton Bell Lifetime Achievement award. She is a member of the adjudicator/workshop leader team at Atlanta's Junior Theatre Festival. Throughout her career, she has served as guest artist at Augusta College, Emory University, Georgia State College, Hartwick College, Oglethorpe University, University of West Georgia, and Kennesaw University, as well as numerous high school programs, most notably as a 10-year theater director at the Georgia Governor's Honors Program. Rosemary has proudly served on the board of TYA/USA and is a member of AEA and SDC.





CLASSROOM ACTIVITIES

CLICK HERE for the video with *In My Granny's Garden* authors Pearl Cleage and Zaron Burnett Jr.

CLICK HERE for the *In My Granny's Garden* stretching video.



CLASSROOM ACTIVITIES



KEEP THE CROWS OUT OF THE GARDEN!

- Have your students stand on one side of the room while you stand in the middle. It is the students' goal to make a holding-hands circle around you, but they can **only move when you aren't looking**.
- **You can step into role as a gardener** and the students can **step into role as birds**.
- If you see a bird moving, you can say **"Shoo Bird"** and send that bird back to their starting point.
- **Emphasize that every single person is important**, and they can't reach their goal without everyone being in the circle.



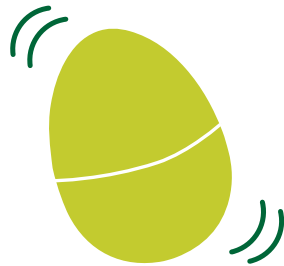
INTERGENERATIONAL STORYTELLING

During *In My Granny's Garden*, the Child and Granny spend time talking together. Talking to your elders is a wonderful way to learn new things about the world. Ask your students to reach out to someone from an older generation. It could be a grandparent, neighbor, or maybe even another teacher at school. Have students ask them about a special tradition in their life—maybe it's something they like to do on a holiday or a family recipe. Then, ask students to present what was shared with them. They can do this by writing a story, drawing a picture, or giving a presentation to the class.





CLASSROOM ACTIVITIES



MAKE A SEED SHAKER

Activity created by the Alliance Theatre

You will need:

- Plastic eggs or two small dixie cups per person
- Dry rice or dry beans
- Masking tape or any colorful tape
- Decoration materials like stickers (optional)

1. **Fill a plastic egg or cup** $\frac{1}{2}$ way with dry rice or dry beans and close the egg, or put the second cup on top of the first, with the two lips of the cup touching.
2. **Wrap tape** around the seam to secure the egg from popping open
3. **Decorate** your egg with stickers, colorful tape, glitter, or anything!



TAKE A SEEDLING

(to the tune of "Frère Jacques")

Use this song as a call and response.

Shake your seeds to the beat!

Take a seedling (take a seedling)

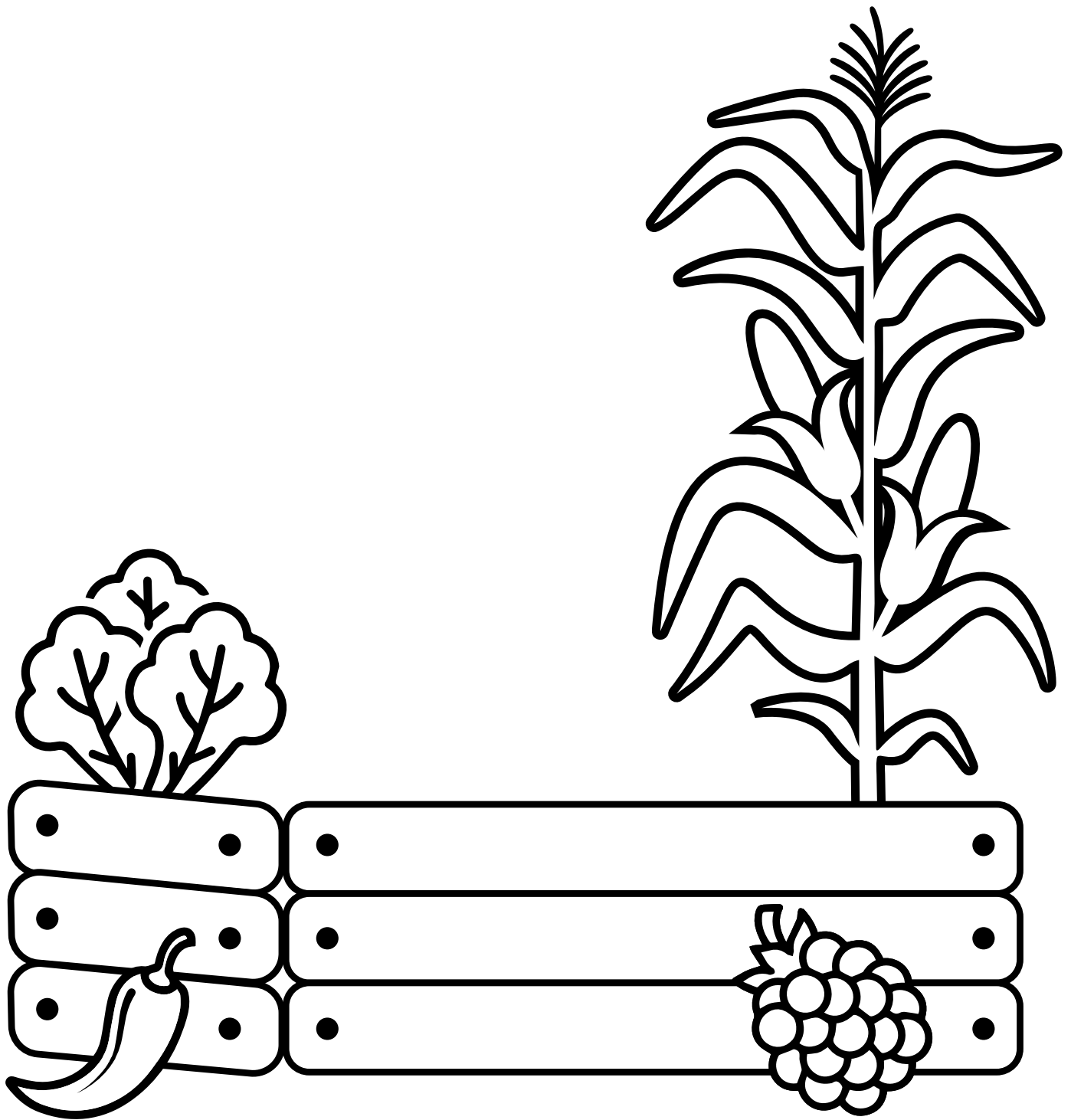
Plant in spring (plant in spring)

Sunshine, water and love (sunshine water and love)

Grow something (grow something)

DESIGN YOUR OWN GARDEN

Granny grows food in her backyard, such as corn, green beans, collard greens, yellow squash, hot peppers, and blackberries. **WHAT WOULD YOU GROW? DESIGN AND COLOR YOUR OWN GARDEN.**





DISCUSSION QUESTIONS

1. What would you plant in a garden?
2. How many of the items planted in Granny's garden can you remember?
3. What does a plant need to grow?
4. What do you think the garden in the play was made of?
5. What outdoor activities do you like to do with your grown-ups?



PARTNERS

- Better Family Life: betterfamilylife.org
- EarthDance Organic Farm School: earthdancefarms.org
- Eckert's Belleville Farm: eckerts.com/location/belleville-farm

3311 Washington Ave.
St. Louis, Missouri 63103
EMAIL: community@metroplays.org

MISSION

Inspired by the intelligence and emotional wisdom of young people, we create professional theater, foster inclusive community and nurture meaningful learning through the arts.

METROPLAYS.ORG

@MetroPlays @metroplays @MetroTheater Metro Theater Company @MetroTheaterCompany

PRESENTING SPONSOR

WHITAKER
FOUNDATION

GENEROUS ADDITIONAL SUPPORT IS PROVIDED BY

theSAIGHfoundation.org

Guy B. Jaffe & Judy Schwartz Jaffe Charitable Foundation
of the St. Louis Community Foundation

SEASON INSTITUTIONAL SUPPORT FROM



ILLUSTRATIONS BY RADCLIFFE BAILEY

© METRO THEATER COMPANY 2022 Written by Karen Bain and Gen Zoufal. Special thanks to the Alliance Theatre (alliancetheatre.org). Designed by Britni Eggers.